



Guide for Installing Rego for Teledermatology

Installing Rego for Teledermatology

Before proceeding with installing Rego you need to ensure the template has been entered into your patient record system EMIS or System One. Here at Vantage we are able to do that for you, if you call us we will schedule an appointment to dial into one PC, we will need admin rights at the practice to do so, and will input the template letter. You will then need to follow the steps below on every PC you wish to access Rego from.

Step 1: Enter the web address: vantagedx.com/regosupport1

Step 2: Select 'Rego' under installer on the webpage



Installer

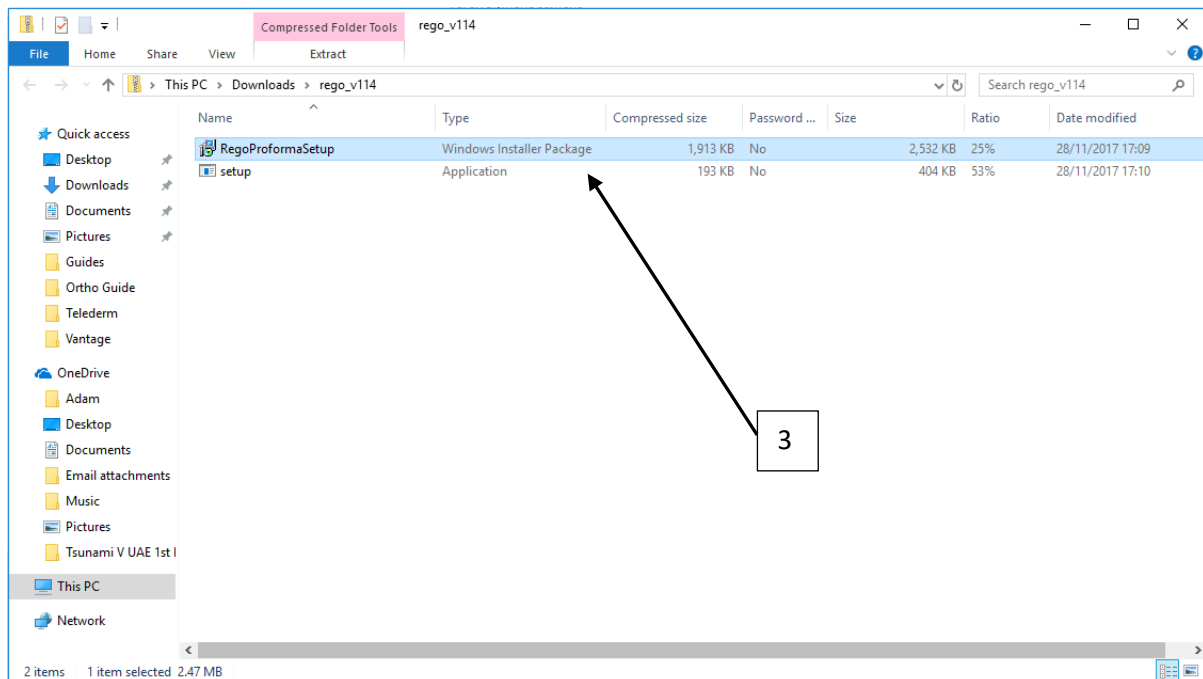
2

Rego

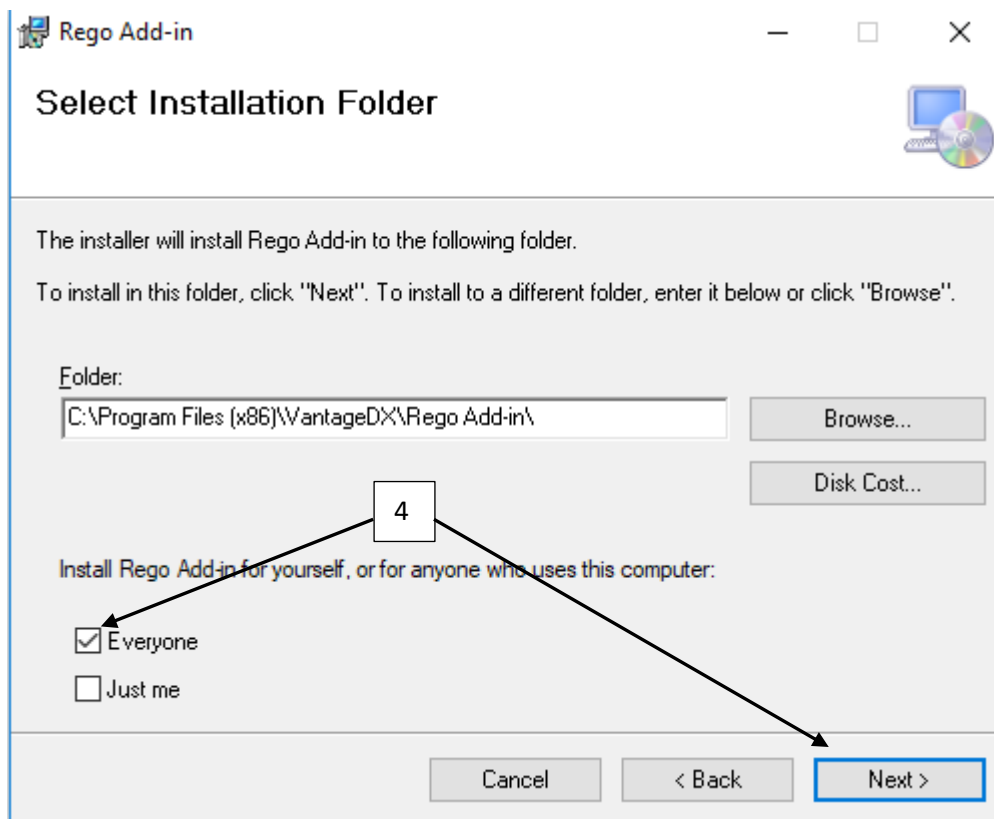
Templates

R4
R4 v2
SOE
Exact (.rft)
Paragon
Pearl
Wysdom
iSmile
Orthotrac
Edge
EMIS Web
SystemOne

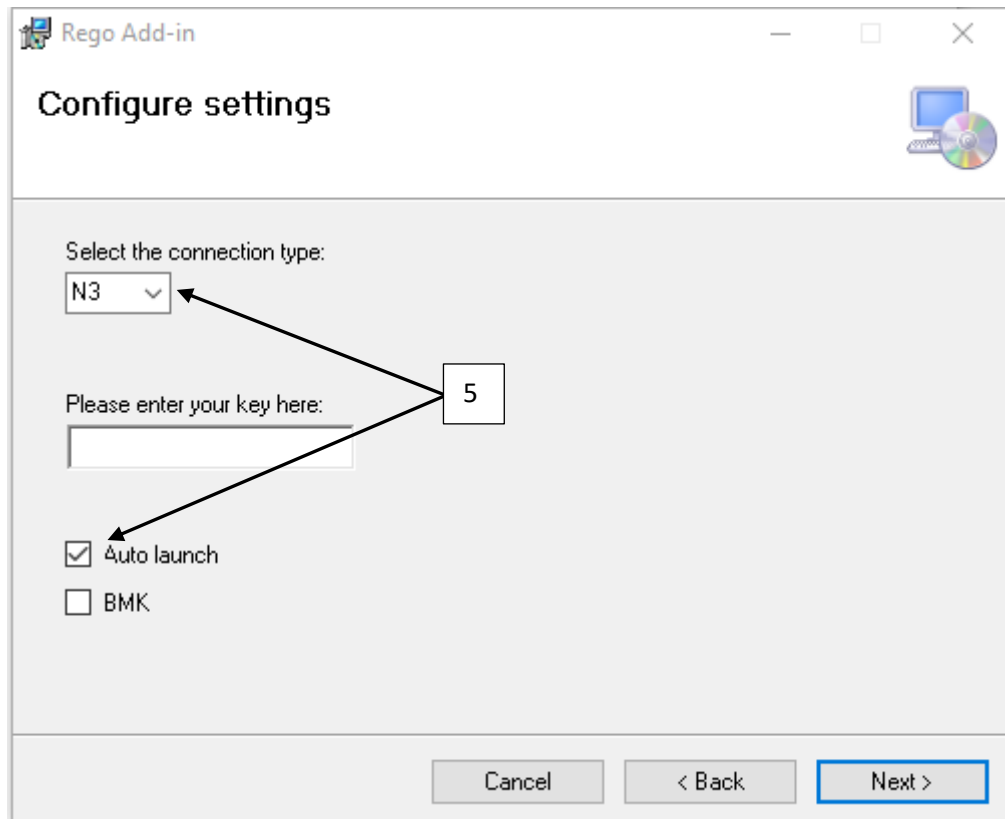
Step 3: Open the 'RegoProformaSetup' file



Step 4: Within the installation wizard that appears Click 'Next' once and tick 'Everyone'



Step 5: Click 'Next' once more and switch the connection type to 'N3' as well as ticking 'Auto Launch'



Step 6: Wait for the installer to complete and confirm it says 'Installation complete'.

You are now ready to go with Rego, once again, this will need to be done on every PC you wish to access Rego from by creating a local link onto the template.

Should you have any issues please email support on: support@vantage.health