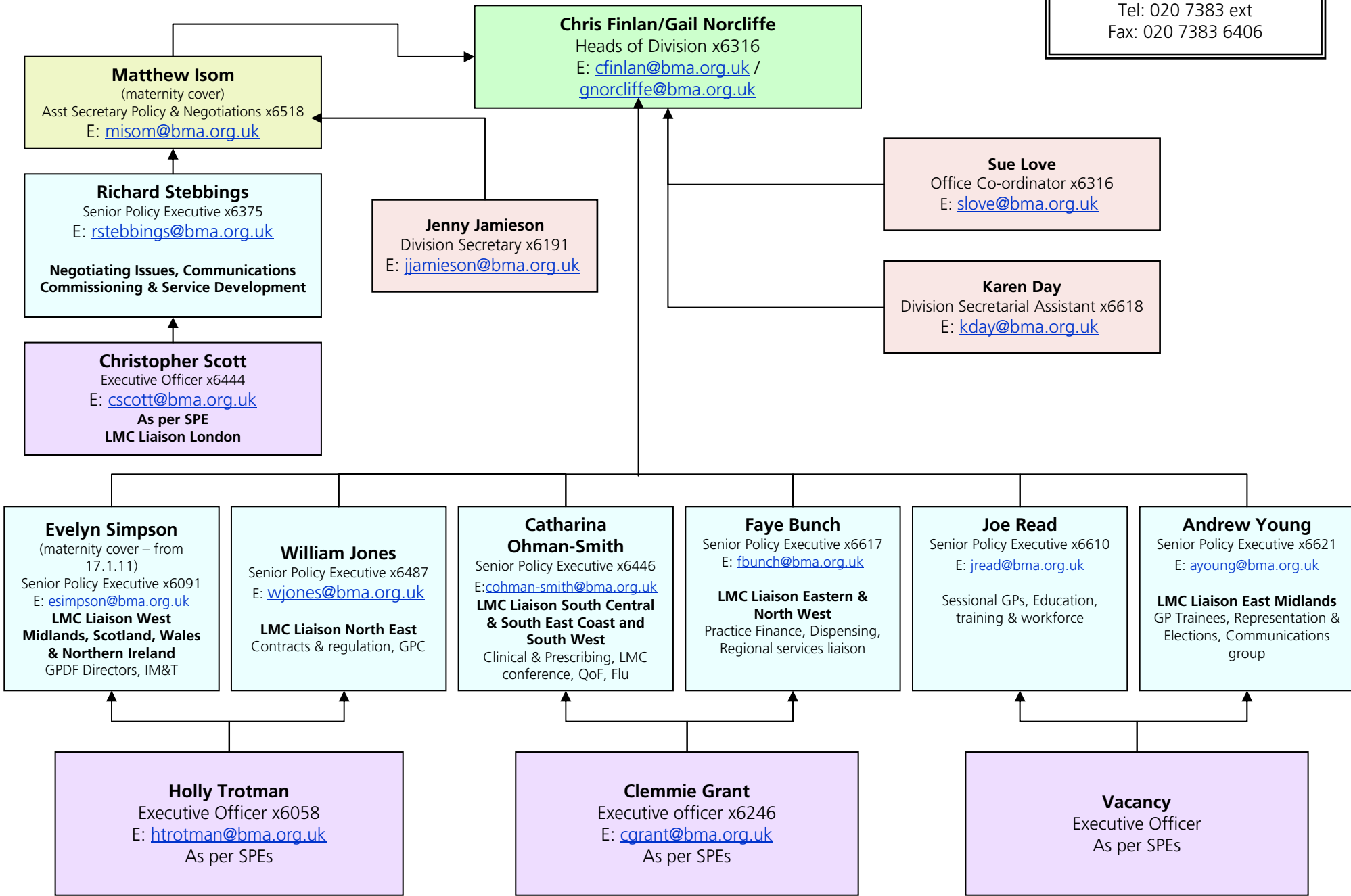


GPC STAFF STRUCTURE

From 20 December 2010

Tel: 020 7383 ext
Fax: 020 7383 6406



Chris Finlan/Gail Norcliffe

Heads of Division x6316

E: cfinlan@bma.org.uk /
gnorcliffe@bma.org.uk

Matthew Isom

(maternity cover)

Asst Secretary Policy & Negotiations x6518

E: misom@bma.org.uk

Richard Stebbings

Senior Policy Executive x6375

E: rstebbing@bma.org.uk

**Negotiating Issues, Communications
Commissioning & Service Development**

Christopher Scott

Executive Officer x6444

E: cscott@bma.org.uk

As per SPE

LMC Liaison London

Evelyn Simpson

(maternity cover – from 17.1.11)
Senior Policy Executive x6091

E: esimpson@bma.org.uk

LMC Liaison West Midlands, Scotland, Wales & Northern Ireland
GPDF Directors, IM&T

William Jones

Senior Policy Executive x6487

E: wjones@bma.org.uk

LMC Liaison North East
Contracts & regulation, GPC

Catharina Ohman-Smith

Senior Policy Executive x6446

E: cohman-smith@bma.org.uk

LMC Liaison South Central & South East Coast and South West
Clinical & Prescribing, LMC conference, QoF, Flu

Faye Bunch

Senior Policy Executive x6617

E: fbunch@bma.org.uk

LMC Liaison Eastern & North West
Practice Finance, Dispensing, Regional services liaison

Joe Read

Senior Policy Executive x6610

E: jread@bma.org.uk

Sessional GPs, Education, training & workforce

Andrew Young

Senior Policy Executive x6621

E: ayoung@bma.org.uk

LMC Liaison East Midlands
GP Trainees, Representation & Elections, Communications group

Holly Trotman

Executive Officer x6058

E: htrotman@bma.org.uk

As per SPEs

Clemmie Grant

Executive officer x6246

E: cgrant@bma.org.uk

As per SPEs

Vacancy

Executive Officer

As per SPEs